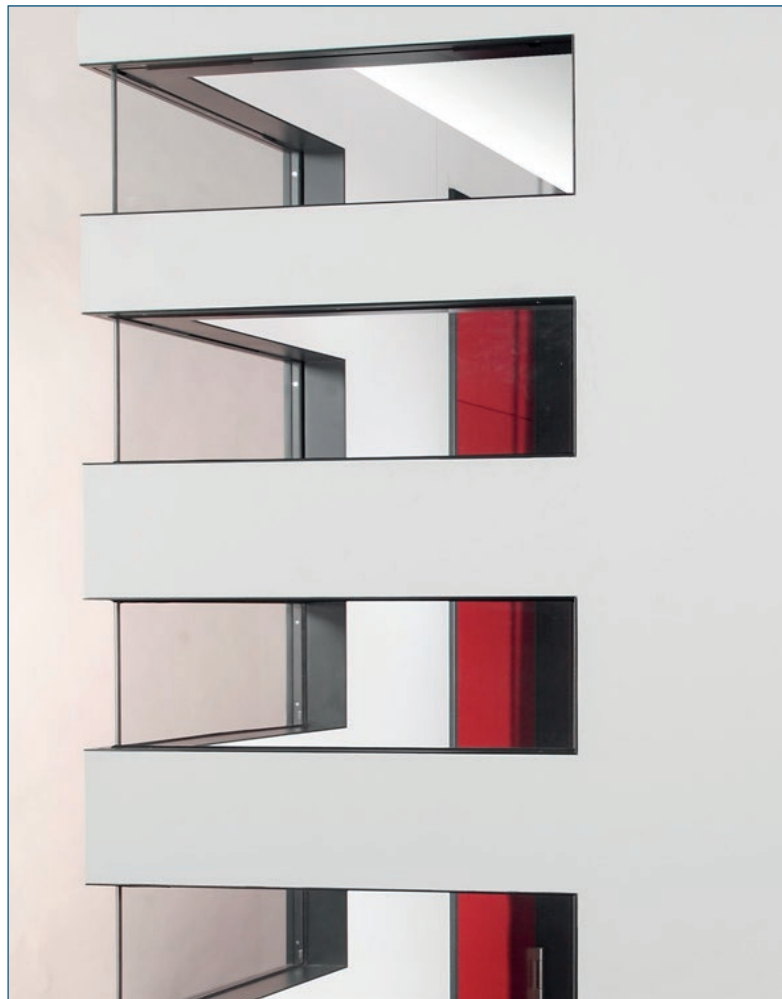


BOS window frames ensure optimal light conditions in interior rooms and allow a view into the room without entering.

The window frames are suitable for single, double and insulation glazing and can be supplied with inner Venetian blinds.



10

Contents	Page
GlasTec	241 - 245
Glazing bead examples	246 - 248

BOS Sales Department:

Tel: +49 2572 203-0
Fax: +49 2572 203-109
E-Mail: info@BestOfSteel.de

BOS Architect Consulting Service:

Tel.: +49 2572 203-204
Fax: +49 2572 203-209
E-Mail: architekten@BestOfSteel.de

Subject to technical change.
The illustrations are not for static
information.

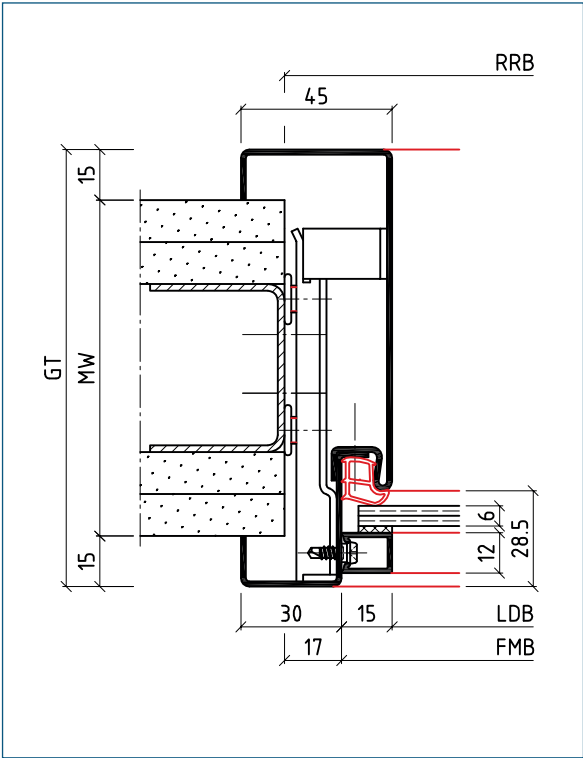
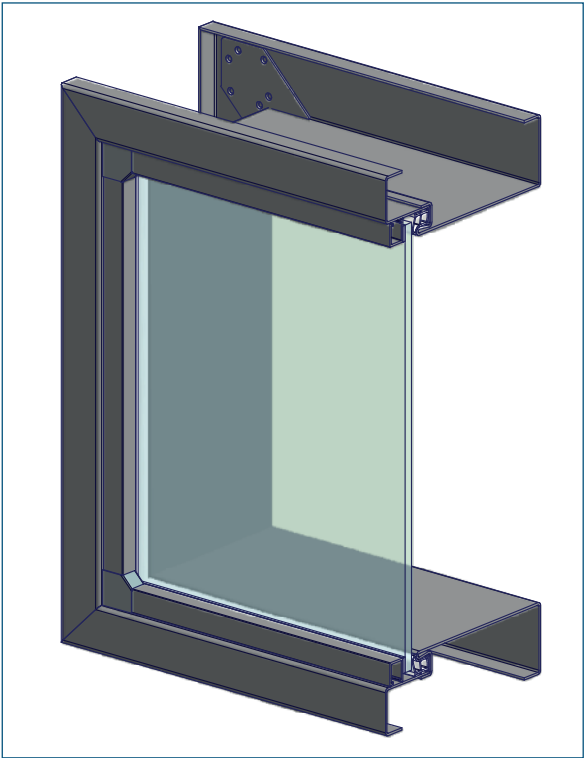
Version 6.0



Article BOS window frames are suitable for almost all wall types and are available for single, double or insulation glazing. The window pane and the window seal are not included in delivery. The window elements are equipped with paintable aluminium glazing beads and stainless steel corner covers as a standard feature.

- Your advantages**
- Optional for increased sound proofing
 - Available as a 2 part split design
 - Available for inner Venetian blinds or with lockable window casement
 - 1 part window frames for single glazing available in preferential sizes at short notice from stock
- Our recommendations**
- For a coordinated visual effect choose a profile which matches that of the door frame
 - Tube glazing beads welded as framework

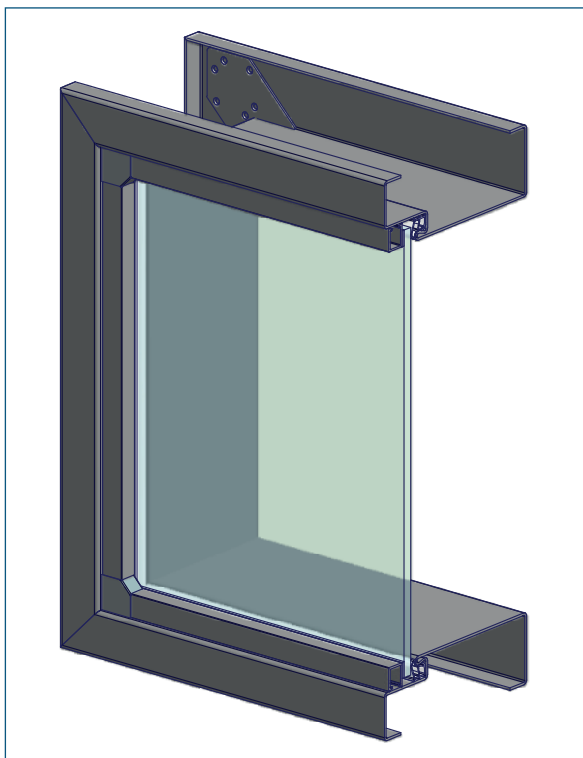
Further information regarding the glazing systems GlasTec®, SoundTec® sound proof glazing, ProTec safety glazing, RadioTec® radiation protection glazing and FlamTec® fireproof glazing can be found on the homepage of our sister company BBE DOMOFERM at www.Domoferm.de



Designation code	15ZBud/15ZBsd
Product description	<ul style="list-style-type: none">- Window frame for single glazing (2 part split)- For almost all wall types- For subsequent installation

Designation code	15ZBud
Product description	<ul style="list-style-type: none">- Window frame for single glazing (2 part split)- For stud walls- Illustration with levelling anchor

Subject to technical change.
The illustrations are not for static information.

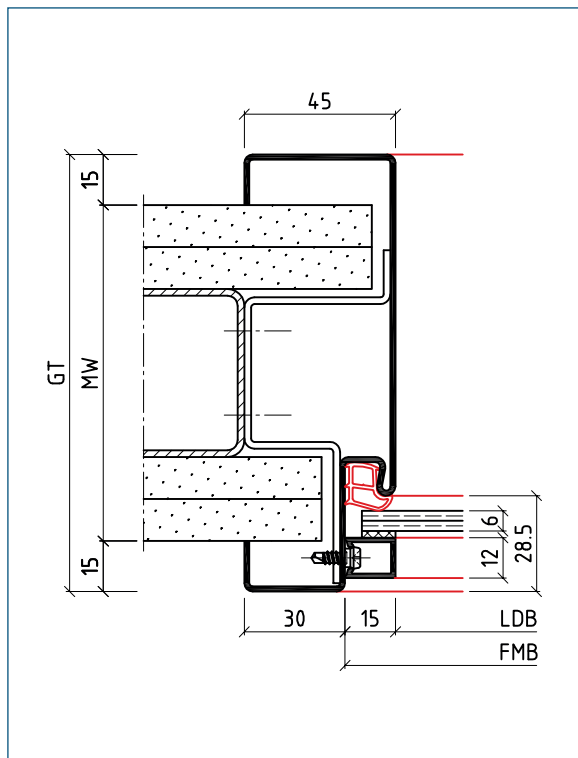


Designation
code

Bud/Bsd

Product
description

- Window frame for single glazing (1 part)
- For stud walls
- For installation together with the wall

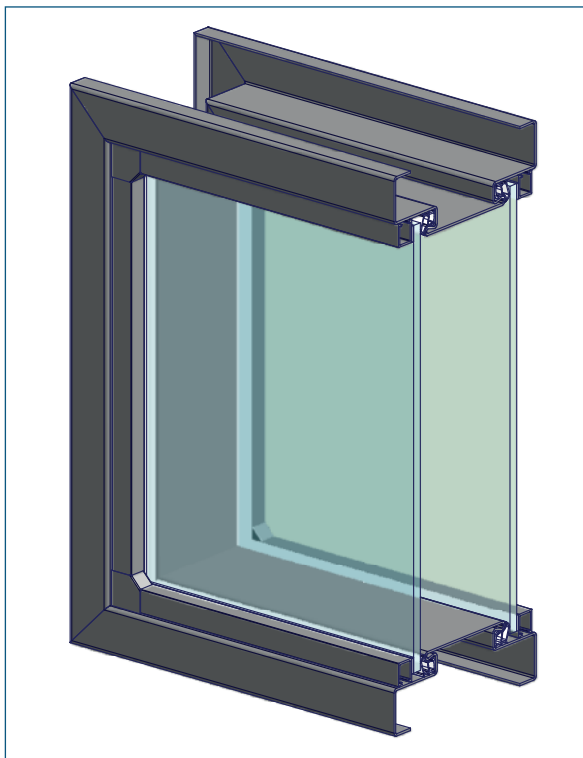


Designation
code

Bud

Product
description

- Window frame for single glazing (1 part)
- For stud walls
- Illustration with bracket anchor

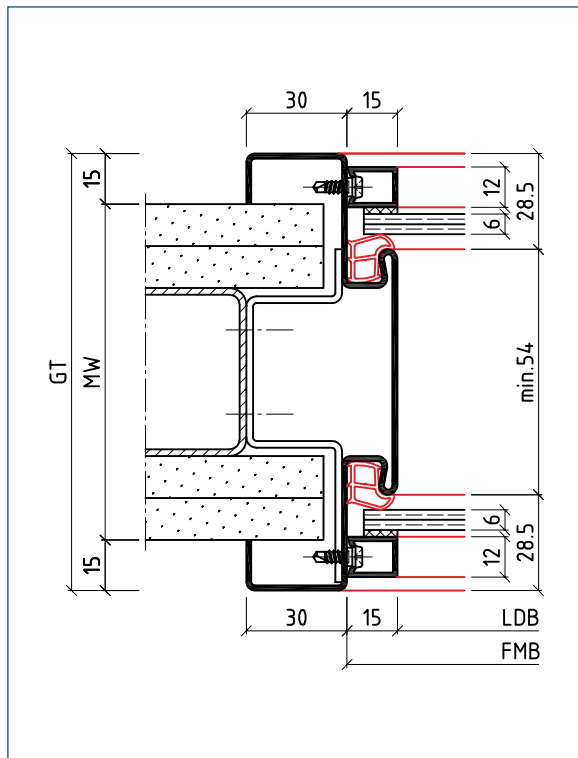


Designation
code

Oud/Osd

Product
description

- Window frame for double glazing (1 part)
- For stud walls
- For installation together with the wall



Designation
code

Oud

Product
description

- Window frame for double glazing (1 part)
- For stud walls
- Illustration with bracket anchor

BOS Sales Department:

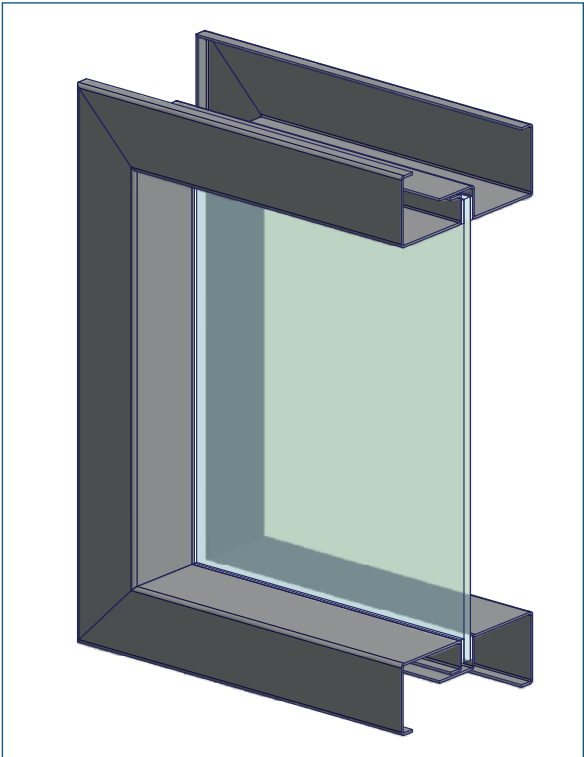
Tel: +49 2572 203-0
Fax: +49 2572 203-109
E-Mail: info@BestOfSteel.de

BOS Architect Consulting Service:

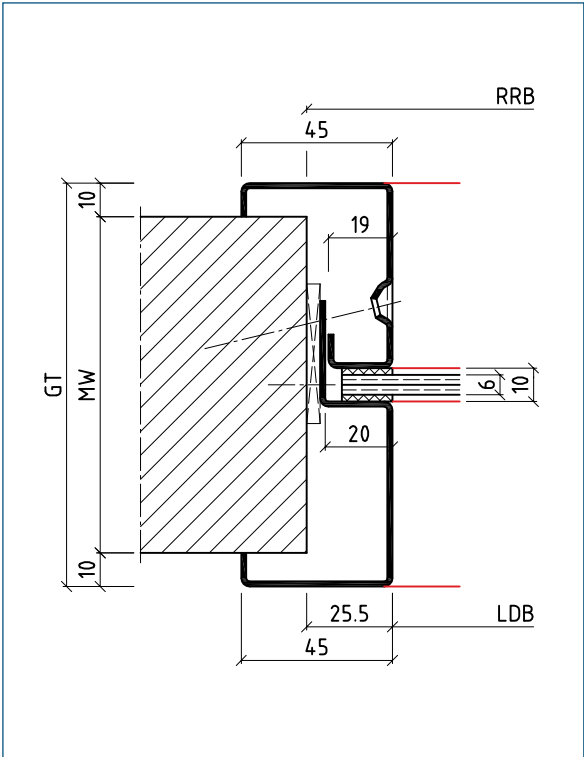
Tel: +49 2572 203-204
Fax: +49 2572 203-209
E-Mail: architekten@BestOfSteel.de

Subject to technical change.
The illustrations are not for static
information.

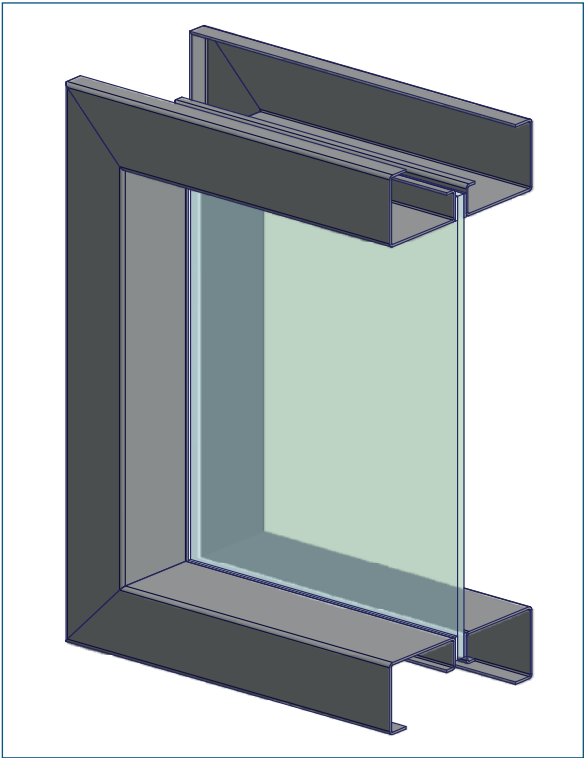
Version 6.0



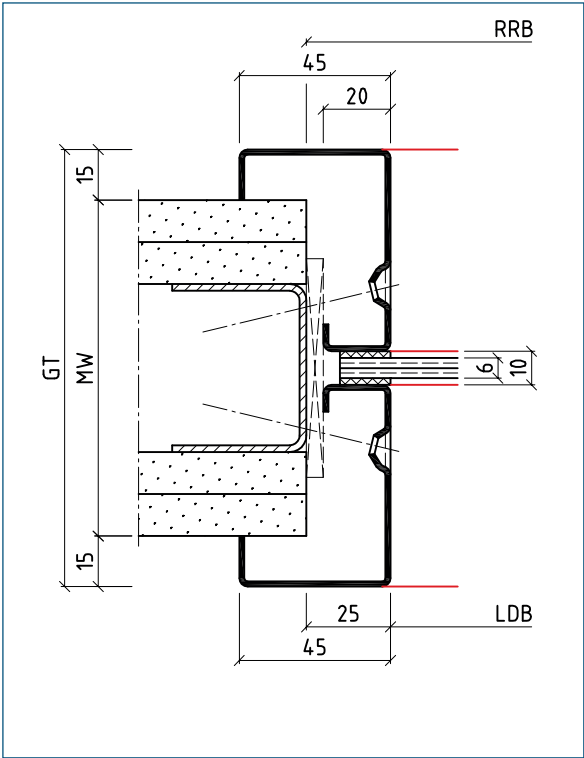
Designation code	wD
Product description	<ul style="list-style-type: none">- Window frame for central single glazing (2 part split)- For almost all wall types- For subsequent installation



Designation code	wD
Product description	<ul style="list-style-type: none">- Window frame for central single glazing (2 part split)- For brick walls- Illustration with frame dowel

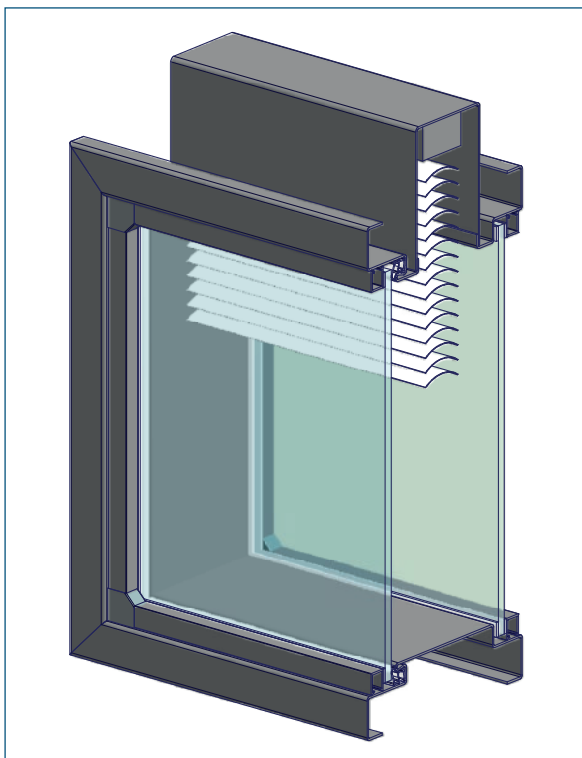


Designation code	Gv
Product description	<ul style="list-style-type: none">- Window frame for central single glazing (2 part split)- For almost all wall types- For subsequent installation



Designation code	Gv
Product description	<ul style="list-style-type: none">- Window frame for central single glazing (2 part split)- For stud walls- Illustration with frame dowel

Subject to technical change.
The illustrations are not for static information.

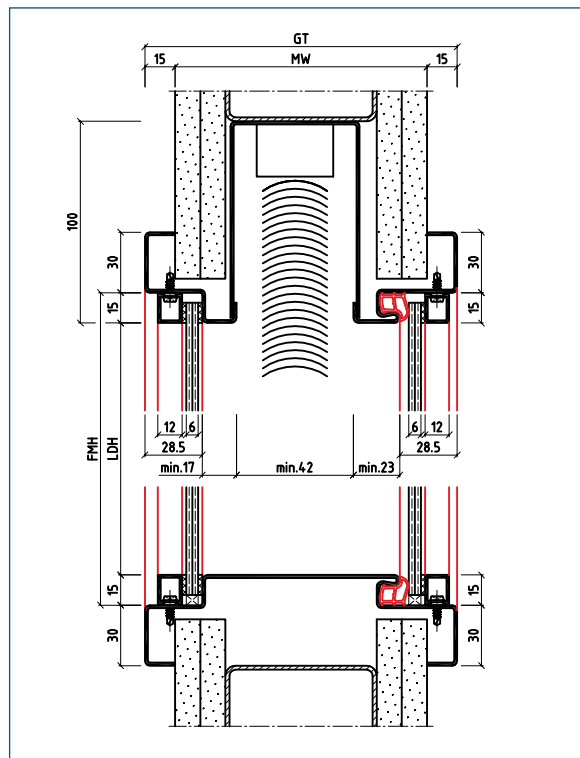


Designation
code

JAud/JAsd

Product
description

- Window frame for double glazing and Venetian blind (1 part)
- For stud walls
- For installation together with the wall

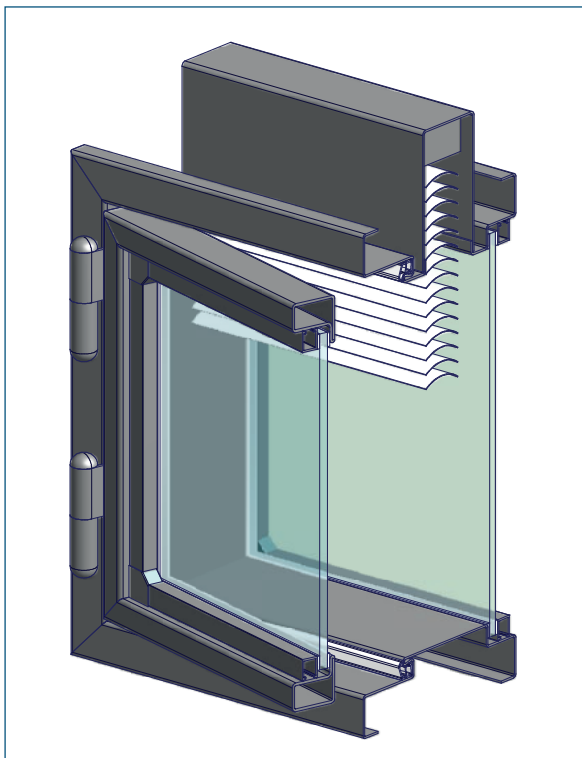


Designation
code

JAud

Product
description

- Window frame for double glazing and Venetian blind (1 part)
- For stud walls

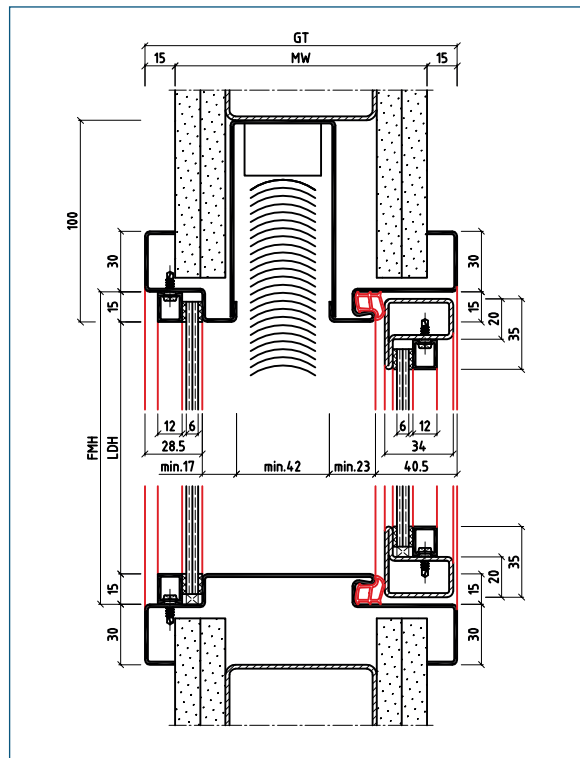


Designation
code

JAud/JAsd

Product
description

- Window frame to open (1 part)
- For stud walls
- For installation together with the wall

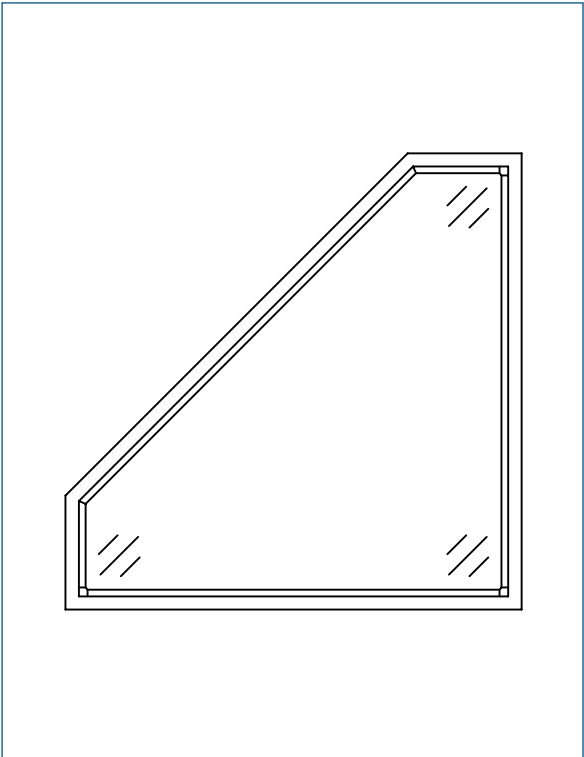


Designation
code

JAud

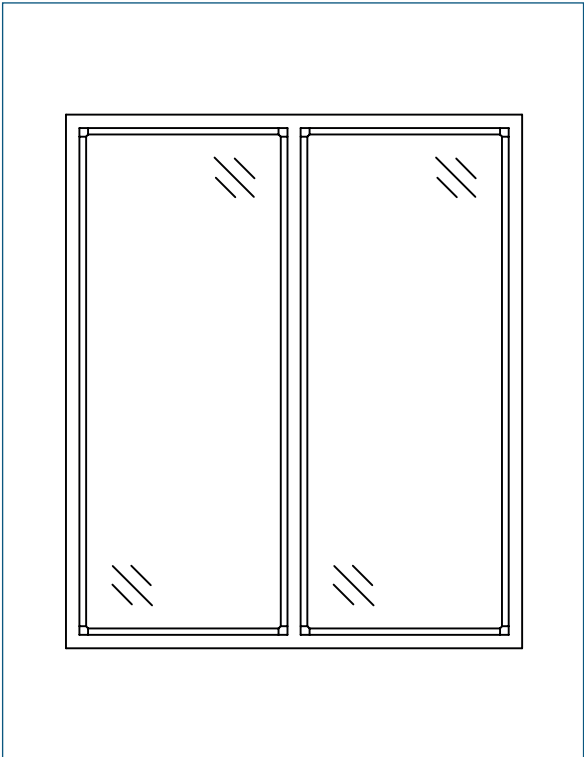
Product
description

- Window frame to open (1 part)
- For stud walls



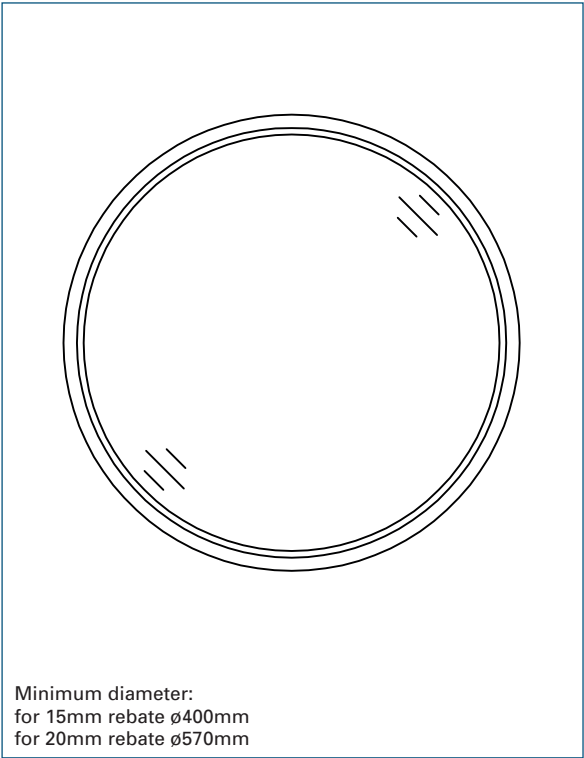
Designation code
Window frame (Example 1)

Product description
- 4 sided element with slanting headpiece
- For brick or stud walls
- Other versions possible



Designation code
Window frame (Example 2)

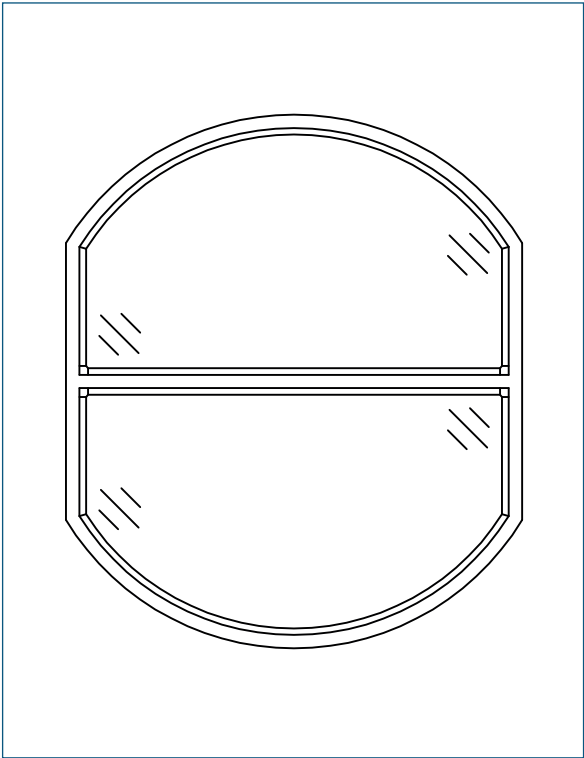
Product description
- 4 sided element with vertical transom bar
- For brick or stud walls
- Other versions possible



Minimum diameter:
for 15mm rebate $\varnothing 400\text{mm}$
for 20mm rebate $\varnothing 570\text{mm}$

Designation code
Window frame (Example 3)

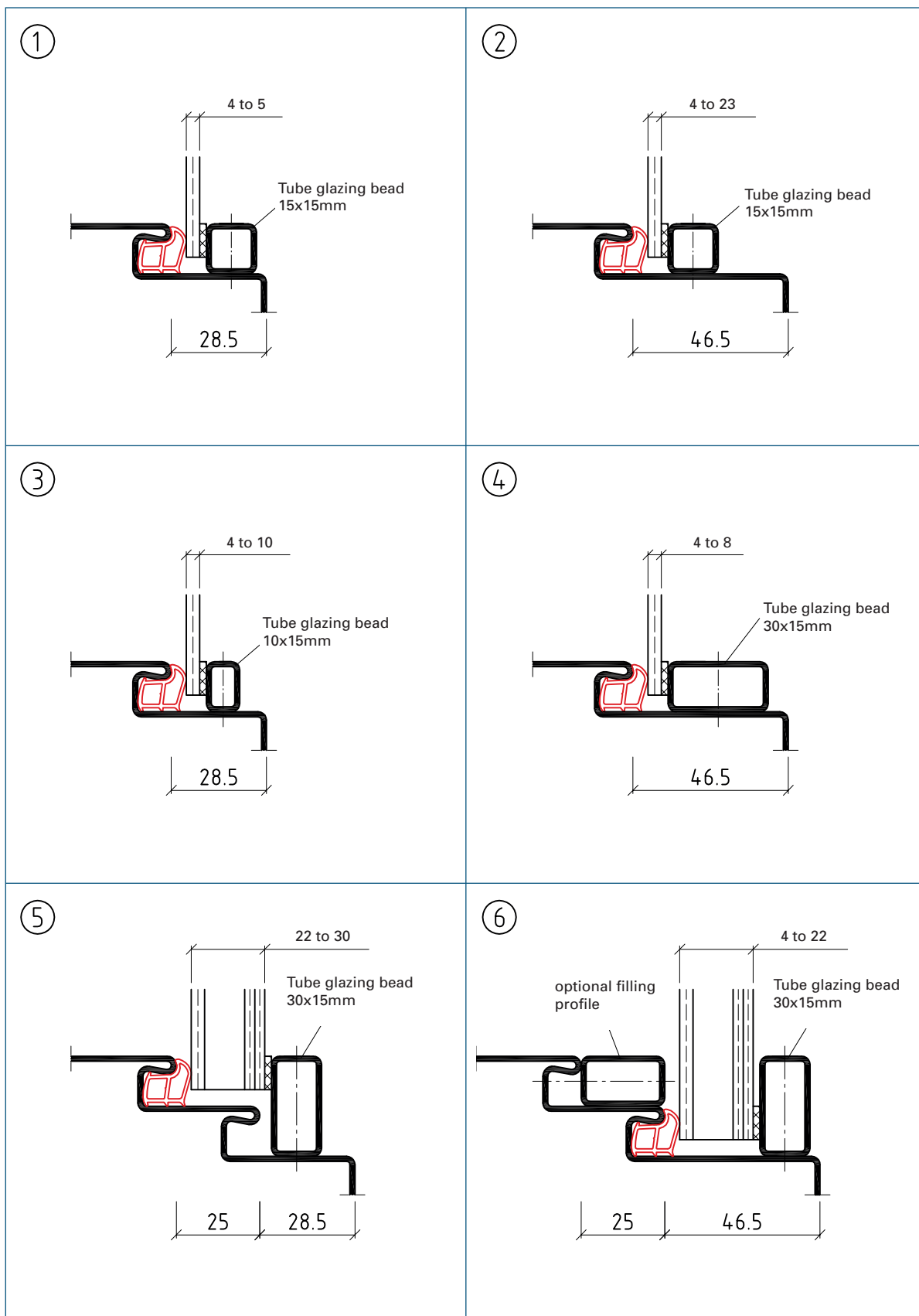
Product description
- Round
- For brick or stud walls
- Other versions possible



Designation code
Window frame (Example 4)

Product description
- Round arch with horizontal transom bar
- For brick or stud walls
- Other versions possible

Subject to technical change.
The illustrations are not for static information.



Designation code

Glazing bead examples

Product description

- Glazing beads
- BOS recommendation: tube glazing beads welded as framework
- Other measurements, glass thicknesses and versions possible

BOS Sales Department:

Tel: +49 2572 203-0
Fax: +49 2572 203-109
E-Mail: info@BestOfSteel.de

BOS Architect Consulting Service:

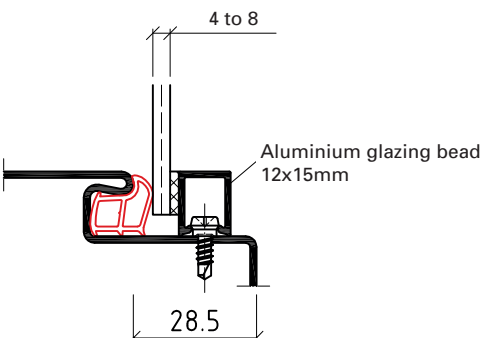
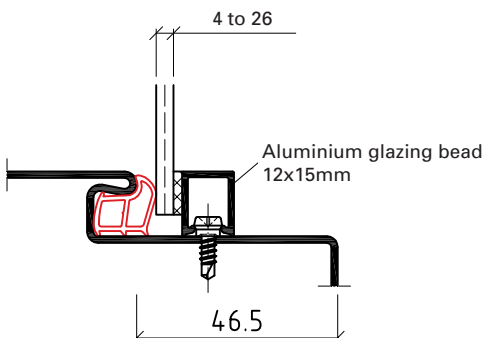
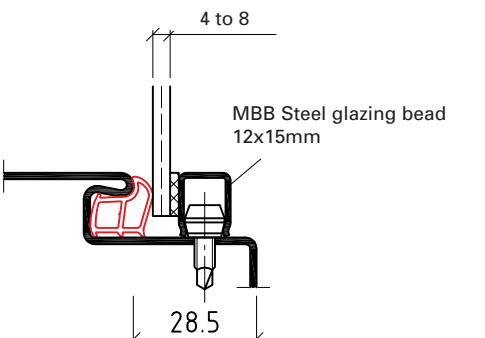
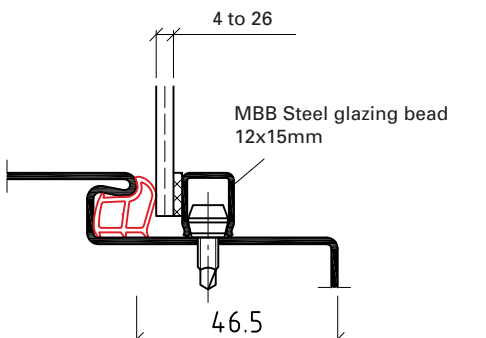
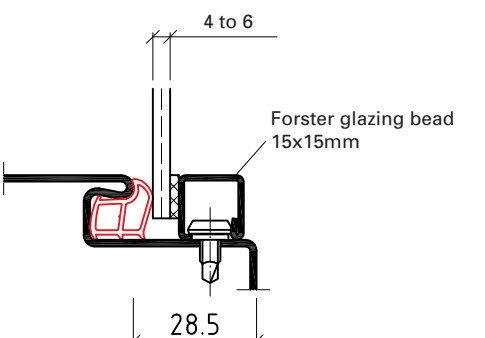
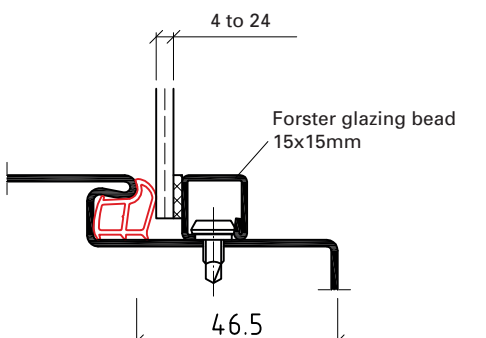
Tel: +49 2572 203-204
Fax: +49 2572 203-209
E-Mail: architekten@BestOfSteel.de

Subject to technical change.
The illustrations are not for static information.

Version 6.0

Window Frames

Glazing Bead Examples

<p>①</p>  <p>Aluminium glazing bead 12x15mm</p> <p>4 to 8</p> <p>28.5</p>	<p>②</p>  <p>Aluminium glazing bead 12x15mm</p> <p>4 to 26</p> <p>46.5</p>
<p>③</p>  <p>MBB Steel glazing bead 12x15mm</p> <p>4 to 8</p> <p>28.5</p>	<p>④</p>  <p>MBB Steel glazing bead 12x15mm</p> <p>4 to 26</p> <p>46.5</p>
<p>⑤</p>  <p>Forster glazing bead 15x15mm</p> <p>4 to 6</p> <p>28.5</p>	<p>⑥</p>  <p>Forster glazing bead 15x15mm</p> <p>4 to 24</p> <p>46.5</p>

Designation code

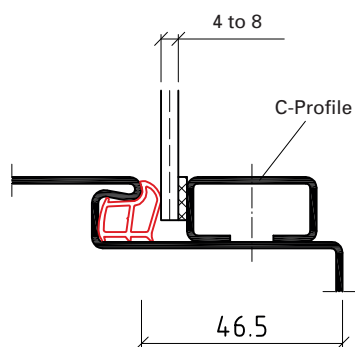
Glazing bead examples

Product description

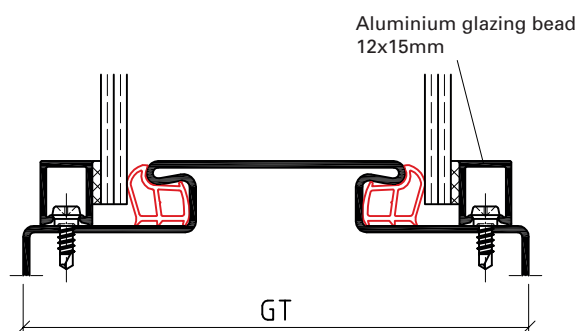
- Glazing beads with stainless steel corner covers
- BOS recommendation: tube glazing beads welded as framework
- Other measurements, glass thicknesses and versions possible

Subject to technical change.
The illustrations are not for static information.

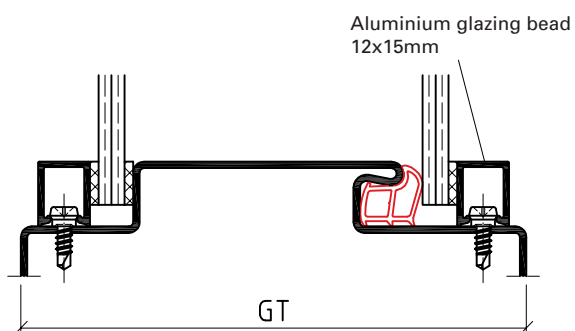
①



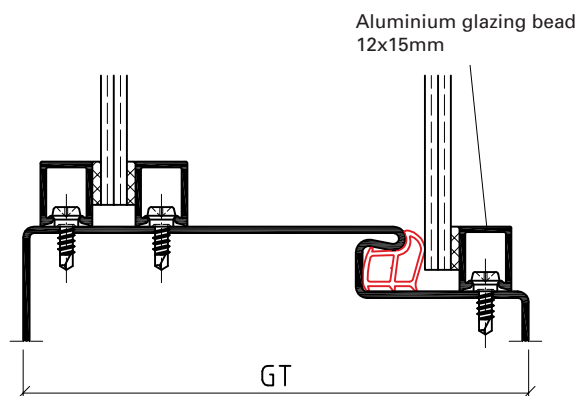
②



③



④



Designation code

**Glazing bead
examples**

Product description

- Glazing beads with stainless steel corner covers
- BOS recommendation: tube glazing beads welded as framework
- Other measurements, glass thicknesses and versions possible

BOS Sales Department:

Tel: +49 2572 203-0
Fax: +49 2572 203-109
E-Mail: info@BestOfSteel.de

BOS Architect Consulting Service:

Tel.: +49 2572 203-204
Fax: +49 2572 203-209
E-Mail: architekten@BestOfSteel.de

Subject to technical change.
The illustrations are not for static
information.

Version 6.0